

PT Bank Syariah Indonesia (Persero) Tbk

Headquarter

Gedung The Tower
Jl. Gatot Subroto No. 27
Kelurahan Karet Semanggi,
Kecamatan Setiabudi,
Jakarta Selatan 1293

Contact

BSI Call - 14040
Phone. 62081584114040
contactus@bankbsi.co.id

Facebook: Bank Syariah Indonesia
Instagram: @banksyariahindonesia
Youtube: Bank Syariah Indonesia
Twitter: bankbsi_id

Report on Allocation
and Impact of Phase II

**Sustainability Sukuk
Issuance Year 2025**



INTRODUCTION

PT Bank Syariah Indonesia (Persero) Tbk (BSI), as the largest Islamic banking entity in Indonesia, has positioned sustainability principles as a fundamental pillar in driving the national economy. For the Company, the implementation of sustainable finance is not merely a regulatory obligation but a strategic manifestation of Maqashid Sharia values that emphasize a balance between economic growth, social welfare, and environmental preservation for the benefit of future generations.

BSI proactively integrates Environmental, Social, and Governance (ESG) aspects into its core business strategy in response to the dynamics of global climate change and the complexity of social challenges. This initiative is realized through the development of innovative Islamic financial products and services, designed not only to generate economic value but also to deliver tangible positive impacts on the green ecosystem and inclusive community empowerment.

This commitment was realized through the corporate action of issuing Sustainability-Based Mudharabah Sukuk I Bank BSI Phase II 2025, with a principal value of Rp5 trillion in June 2025. This instrument is designed as a catalyst to accelerate the transition toward a low-carbon economy and serves as a bridge connecting investment capital with strategic projects focused on resource efficiency, renewable energy, and the improvement of micro and medium economic welfare. Through the issuance and management of sustainable financial instruments, BSI affirms its position as a strategic partner in inclusive national development.

This Sustainability Sukuk Phase II Report has been prepared as a form of transparency and accountability by BSI to all stakeholders. The report presents the contributions and tangible impacts of BSI's social and environmental responsibility management. This strategic initiative is prepared in accordance with Financial Services Authority Regulation (POJK) No. 18 of 2023 concerning the Issuance and Requirements of Sustainability-Linked Debt Securities and Sukuk, issued on October 10, 2023, and forms part of the Sustainability-Based Mudharabah Sukuk I Shelf Registration (Public Offering), with a maximum issuance permit of Rp10 trillion.

Through strong synergy and continuous commitment, BSI strives to become "New Energy for Indonesia," consistently delivering progress, value, and equitable benefits for all segments of society.

TABLE OF CONTENTS

	2 Introduction
	4 Summary of Framework and Issuance of BSI Sustainability Sukuk
	9 Allocation Report
	12 Impact Report
	16 Conclusion
	17 Appendix

SUMMARY OF FRAMEWORK AND ISSUANCE OF BSI SUSTAINABILITY SUKUK

A. BSI Sustainability Sukuk Framework

BSI has developed a comprehensive Sustainability Sukuk Framework as the basis for the issuance of Sustainability Sukuk Phase II in June 2025. This framework not only complies with Financial Services Authority Regulation (POJK) No. 18 of 2023 but has also undergone an external review (Second Party Opinion) by the SDGs Hub of Universitas Indonesia, which provided an “Environmentally Friendly/Sustainable” opinion. This ensures that each financed project meets accountable green and social qualification standards.

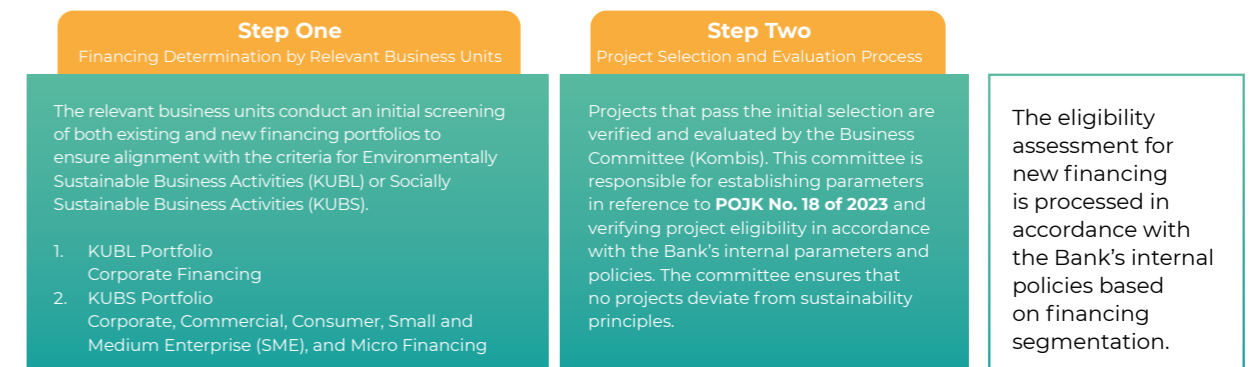
The following is a summary of the Sustainability Sukuk Framework:

Use of Proceeds



B. BSI Sustainability Sukuk Project Evaluation and Selection Process

BSI implements a rigorous selection mechanism through a two-step approach to maintain the quality of the portfolio, as outlined below:



The selection mechanism provides dual assurance for investors. BSI ensures that all project portfolios meet environmental eligibility criteria and are free from non-halal elements (such as gambling, weapons, or alcohol). This approach not only complies with Sharia principles but also mitigates reputational and business risks.

C. Management of Proceeds from the Issuance of BSI Sustainability Sukuk

The management of proceeds from the issuance is conducted through a centralized management mechanism to ensure accurate allocation. BSI implements cross-functional coordination involving three (3) work units to ensure that the funds are managed prudently, as outlined below:



D. BSI Sustainability Sukuk Reporting

Allocation Report

BSI will publish a Sustainability Sukuk report annually, no later than one year after the proceeds from the first issuance are obtained by BSI, in order to provide transparency to investors and regulators regarding the implementation of the Framework.

Impact Report

BSI will publish environmental and/or social impact reports of eligible assets financed by the issued Sustainability Sukuk. The quantitative positive impacts presented in the BSI Sustainability Sukuk report include the following indicators:

Green Category

KUBL Type	Indicator
Renewable Energy	<ol style="list-style-type: none"> Estimated renewable energy generation per year in MWh/GWh (electricity). Estimated annual greenhouse gas emissions reduced/avoided in tons of CO₂ equivalent. Installed renewable energy capacity in MW.
Energy Efficiency	<ol style="list-style-type: none"> Estimated energy savings per year in MWh/GWh (electricity) and GJ/TJ (other energy). Estimated annual greenhouse gas emissions reduced/avoided in tons of CO₂ equivalent.
Pollution Prevention and Control	Amount of waste (tons or m ³) prevented, reduced, recycled, and reused.
Sustainable Management of Living Natural Resources and Land Use	<ol style="list-style-type: none"> Estimated number of hectares protected and/or certified. Estimated number of trees planted in reforestation projects certified by FSC/PEFC.
Conservation of Terrestrial and Aquatic Biodiversity	<ol style="list-style-type: none"> Estimated number of marine miles protected and/or certified. Estimated number of hectares acquired/protected and certified.
Environmentally Friendly Transportation	<ol style="list-style-type: none"> Estimated annual greenhouse gas emissions reduced/avoided in tons of CO₂ equivalent. Number of environmentally friendly vehicles launched. Estimated kilometres of railway lines/special bus lanes, BRT corridors, LRT corridors, and new or improved bicycle lanes.
Sustainable Water and Wastewater Management	<ol style="list-style-type: none"> Reduction in water consumption in economic activities. Wastewater treated in accordance with appropriate standards; percentage of total waste prevented, minimized, reused, or recycled. Absolute amount of annual water usage before and after project implementation. Number of people with access to clean drinking water.
Climate Change Adaptation	Number of new facilities, systems, and equipment used to support climate resilience.
Products that Reduce Resource Use and Generate Less Pollution (Eco-efficient)	<ol style="list-style-type: none"> Amount of waste recycled. Estimated annual greenhouse gas emissions reduced/avoided in tons of CO₂ equivalent. Number of environmentally friendly buildings with green building certification.
Green Buildings that Meet National, Regional, or International Standards or Certifications	<ol style="list-style-type: none"> Estimated annual greenhouse gas emissions avoided/reduced in tons of CO₂ equivalent. Percentage of energy use reduced/avoided.

Social Category

KUBS Type	Indicator
Affordable Basic Infrastructure Services in Terms of Access and Cost	Number of households with access to road networks, electricity, water, and sanitation services.
Access to Essential Services	<ol style="list-style-type: none"> Number of public service facilities financed. Number of people with access to affordable healthcare services. Number of community facilities financed. Number of students supported.
Affordable Housing	Number of low-income community groups receiving financial assistance for affordable housing financing.
Job Creation and Programs Designed to Prevent and/or Reduce Unemployment, Including Small, Medium, and Micro Enterprise Financing	<ol style="list-style-type: none"> Number of MSMEs financed. Number of MSME workers financed. MSME financing portfolio based on sector distribution.
Food Security and Sustainable Food Systems	<ol style="list-style-type: none"> Amount of land area in km² and percentage of land or area growth used for agriculture or environmentally friendly food supply activities. Number of MSMEs in the sustainable and/or environmentally friendly food processing and management sector.
Socio-Economic Improvement and Empowerment	Number of MSMEs or individuals financed through the KUR program.
Other Socially Sustainable Business Activities	Providing positive social impact in accordance with POJK parameters or other relevant provisions.

E. Issuance of BSI Sustainability Sukuk

PT Bank Syariah Indonesia Tbk (BSI) issued the Sustainability-Based Mudharabah Sukuk I Bank BSI Phase II 2025 (Sustainability Sukuk Phase II) on June 26, 2025, with a total principal amount of Rp5,000,000,000,000 (five trillion Rupiah), consisting of three (3) maturity series: Series A with a tenor of 370 days, Series B with a tenor of 2 years, and Series C with a tenor of 3 years.

The issuance of the Sustainability Sukuk marked several milestones for BSI, including the following:

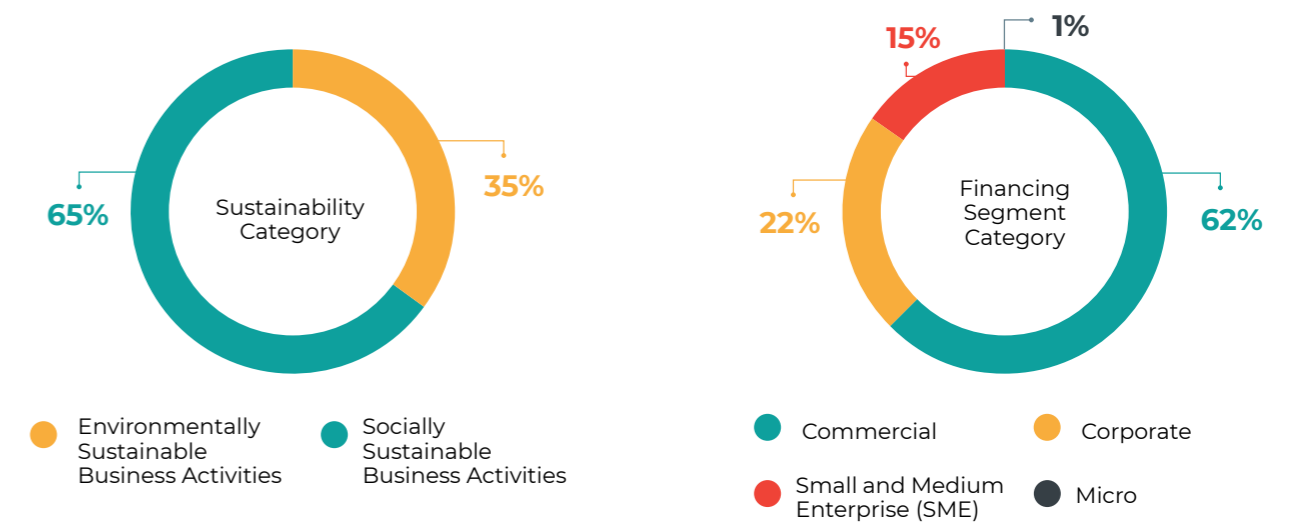
- Part of the series of the first Sustainability Sukuk issuances conducted by a bank in Indonesia.
- BSI's Sustainability Sukuk attracted strong investor interest during the bookbuilding process, as evidenced by an oversubscription of three (3) times for the initial offering.

ALLOCATION REPORT

Structure of BSI Sustainability Sukuk

Instrument Name	: Sustainability-Based Mudharabah Sukuk I Bank BSI Phase II 2025					
Contract Structure	: Mudharabah					
Currency	: Issued in Rupiah					
Total Issuance	: Rp5.000.000.000.000,- (five trillion Rupiah)					
	Series	Tenor	Maturity Date	Coupon	Value	Status
	A	370 days	July 6, 2026	6.45%	Rp2,445 Trillion	Existing
	B	2 years	June 26, 2027	6.55%	Rp0,175 Trillion	Existing
	C	3 years	June 26, 2028	6.65%	Rp2,380 Trillion	Existing
Rating	: idAAA _(sy) Pefindo Final Rating					
Use of Proceeds	: Disbursement of financing funds for the categories of Environmentally Sustainable Business Activities (KUBL) and Socially Sustainable Business Activities (KUBS)					
Listing	: Indonesia Stock Exchange (PT Bursa Efek Indonesia)					

Based on the position as of 31 December 2025, BSI had realized the disbursement of proceeds from the issuance of the Sustainability Sukuk amounting to 100% of the total funds raised. The funds were distributed across 4 (four) out of 10 (ten) categories of Environmentally Sustainable Business Activities (KUBL) and 4 (four) out of 6 (six) categories of Socially Sustainable Business Activities (KUBS). This realization indicates that all proceeds have been fully absorbed into financing portfolios that meet the Eligible Assets criteria in accordance with BSI's Sustainability Sukuk Framework and POJK Number 18 of 2023 concerning the Issuance and Requirements of Sustainable Debt Securities and Sukuk, issued on 10 October 2023. The details of the allocation of proceeds from the issuance of the Sustainability Sukuk are as follows:



The allocation structure is dominated by Socially Sustainable Business Activities (KUBS) with a proportion of 65%, while Environmentally Sustainable Business Activities (KUBL) account for 35% of the total portfolio. The largest distribution in terms of customer segmentation is concentrated in the commercial segment at 62%, while the Small and Medium Enterprise (SME) segment accounts for 15%. This composition represents the alignment between BSI's financing distribution strategy and its efforts to support the real economic sector and MSME empowerment.

The details of distribution by financing segment based on the Sukuk underlying are prepared in reference to the business activity categories under POJK No. 18 of 2023 for the reporting period position as of 2025, as described below:

In Rupiah

Socially Sustainable Business Activities (KUBS)			
A.	1.	Access to Essential Services	3,124,646,824,529 96.6%
	2.	Job Creation and Programs Designed to Prevent and/or Reduce Unemployment, including Small, Medium, and Micro Enterprise Financing	64,467,374,252 2.0%
	3.	Food Security and Sustainable Food Systems	37,756,790,466 1.2%
	4.	Socio-Economic Improvement and Empowerment	9,083,599,777 0.2%
Total KUBS			3,235,954,589,024 100.0%









Within the social category, the largest allocation amounting to Rp3.12 trillion was distributed to the Access to Essential Services category. Financing in this sector is focused on the provision of affordable healthcare and education facilities. This distribution is intended to support the availability of basic infrastructure that is vital for society, in line with the social performance indicators established in the Framework.

In Rupiah

Environmentally Sustainable Business Activities (KUBL)			
B.	1.	Sustainable Management of Living Natural Resources and Land Use	64.8%
	2.	Products that Reduce Resource Use and Generate Less Pollution (Eco-Efficient)	17.9%
	3.	Renewable Energy	16.4%
	4.	Sustainable Water and Wastewater Management	0.9%
Total KUBL		1,764,045,410,976	100.0%

Within the environmental category, the largest portion amounting to Rp1.14 trillion was allocated to Sustainable Management of Living Natural Resources and Land Use. With regard to financing in the plantation sector, BSI applies the prudential principle by requiring customers to possess relevant sustainability certifications, including the Indonesian Sustainable Palm Oil (ISPO) and the Forest Stewardship Council (FSC). This requirement is implemented to ensure that the debtor's activities comply with applicable environmental governance standards.

The details of financing distribution in reference to the Sustainable Development Goals (SDGs) and the BSI Sustainability Sukuk Framework are as follows:

Sustainable Development Goals (SDGs) Alignment Key	Eligible Financing Categories Funded by the Bank
 	<p>Products that Reduce Resource Use and Generate Less Pollution (Eco-Efficient)</p> <p>Financing distribution in the Corporate segment under a Musyarakah contract for industries that have generated less pollution (eco-efficient) through the introduction of environmentally friendly products with eco-labels or environmental certifications, as well as resource-efficient packaging and distribution. Financing recipients include paper processing companies and fertilizer industries that have implemented resource efficiency technologies and minimized waste in accordance with environmental threshold standards.</p>
  	<p>Renewable Energy</p> <p>Financing distribution in the Corporate segment under a Musyarakah contract for renewable energy power generation industries. Financing recipients include hydroelectric power generation companies.</p>
  	

Sustainable Development Goals (SDGs) Alignment Key	Eligible Financing Categories Funded by the Bank
  	<p>Sustainable Water and Wastewater Management</p> <p>Financing distribution in the Corporate segment under a Musyarakah contract for sustainable water and wastewater management industries. Financing recipients include water treatment and drinking water supply companies.</p>
  	
  	<p>Sustainable Management of Living Natural Resources and Land Use</p> <p>Financing distribution in the Corporate and Commercial segments under a Musyarakah contract in the rubber and palm oil plantation sectors that implement sustainable management practices. Financing recipients are companies that have obtained national and international sustainability certifications, namely Forest Stewardship Council (FSC) certification for rubber plantation and forest product management, or Indonesian Sustainable Palm Oil (ISPO) certification for palm oil commodities.</p>
  	
 	<p>Job Creation and Programs Designed to Prevent and/or Reduce</p> <p>Unemployment, Including Small and Medium Enterprise Financing</p> <p>Financing distribution in the Commercial, Consumer, and Small and Medium Enterprise (SME) segments under a Musyarakah contract aimed at job creation and reducing unemployment.</p>
 	
 	<p>Food Security and Sustainable Food Systems</p> <p>Financing distribution in the Commercial and Small and Medium Enterprise (SME) segments under a Musyarakah contract aimed at supporting food security and sustainable food systems. Financing recipients include food processing companies and food trading companies.</p>
 	<p>Socio-Economic Improvement and Empowerment</p> <p>Financing distribution in the Commercial, Small and Medium Enterprise (SME), and Micro segments under a Musyarakah contract aimed at ensuring equitable access to and control over assets, services, resources, and opportunities, as well as equal participation and integration in markets and society. Fund allocation is prioritized for micro, small, and medium enterprise needs.</p>
 	
  	<p>Access to Essential Services</p> <p>Financing distribution in the Commercial and Small and Medium Enterprise (SME) segments under a Musyarakah contract aimed at equitable access to healthcare, medical services, and business activities related to education. Financing recipients include hospitals, foundations operating in the healthcare sector, pharmaceutical and medical equipment companies, universities, community empowerment foundations, Islamic boarding schools (pesantren), and educational institutions.</p>

IMPACT REPORT

This chapter presents the quantification of environmental and social impacts generated from the Sustainability Sukuk financing portfolio. In preparing the impact estimates, the Bank applies conservative and prudential principles. The impact calculations are based on customers' actual performance data as well as the use of generally recognized emission factors and technical assumptions (as attached in the Appendix section). This impact reporting reflects BSI's commitment not only to distributing funds but also to monitoring the effectiveness of financing in creating added value for the environmental ecosystem and social welfare.

In aggregate, the financing distributed provides significant contributions to two main pillars. Under the Social Pillar, the Bank expands access to basic services for more than 10,000,000 beneficiaries in the healthcare and education sectors, as well as supports job creation through MSMEs. Under the Environmental Pillar, the Bank contributes to decarbonization through renewable energy operations and resource efficiency in the manufacturing industry sector. The estimated environmental and social impacts of eligible financing, including those financed from the proceeds of the Sustainability Sukuk issuance, are described as follows:

No.	Financing Category	% Composition Underlying Sukuk	Financing Segment	Description & Impact Indicators
1.	Access to Essential Services	62.49%	Financing in the Commercial and Small and Medium Enterprise (SME) segments under Musyarakah contract	<p>Disbursement of financing to the Commercial and Small and Medium Enterprise (SME) segments under the Musyarakah contract, particularly for business activities providing (1) access to healthcare and (2) education.</p> <p>The results of the distribution of funds can be reported as follows:</p> <ol style="list-style-type: none"> Total community service facilities financed: 334 institutions consisting of: <ul style="list-style-type: none"> 121 educational institutions, including kindergartens, elementary schools, Islamic junior high schools, high schools, universities, and other educational facilities. 213 health institutions, including hospitals, clinics, and other health facilities. The number of people with access to healthcare services is estimated at 10,882,179 people per year. The number of students assisted or receiving educational facilities as of December 2025 is estimated at 153,751 students.
2.	Job Creation and Programs Designed to Prevent and/or Reduce Unemployment, Including Financing for Small, Medium, and Micro Enterprises	1.29%	Financing in the Commercial and Small and Medium Enterprise (SME) segments under Musyarakah contract	<p>Financing distribution in the Commercial and SME segments under Musyarakah contract for job creation in agriculture, processing, trade, and service sectors with details as follow:</p> <ol style="list-style-type: none"> The number of MSMEs that received financing was distributed to 45 MSMEs. The number of MSME workers who are provided with financing, where the results of financing distribution as of December 2025 are estimated at 855 people. The MSME financing portfolio based on the distribution of sectors channelled to job creation and programs to prevent and/or reduce unemployment is Rp64,467,374,252,- consisting of the Commercial and Small and Medium Enterprise (SME) sectors of Rp8,312,300,500,- and Rp56,155,073,752,- respectively.

No.	Financing Category	% Composition Underlying Sukuk	Financing Segment	Description & Impact Indicators
3.	Food Security and Sustainable Food Systems	0.76%	Financing in the Small and Medium Enterprise (SME) segment under Musyarakah contract	<p>Financing distribution in the Small and Medium Enterprise (SME) segment under a Musyarakah contract, particularly for financing customers engaged in food provision and processing activities.</p> <ol style="list-style-type: none"> The total area of livestock, fisheries, and food processing business facilities, as well as production capacity as of December 2025, can be described as follows: <ol style="list-style-type: none"> Tempe production business area with a land size of ± 6.5 hectares or equivalent to 0.065 km² located in Aceh Province. The production capacity is estimated at 300 kg of tempe per week. Dairy processing and dairy-based food production business area with a land size of ± 1.13 hectares or equivalent to 0.0113 km² located in West Java Province. The production capacity is estimated at 15,432 tons of milk and dairy-based products per year. Rice milling and rice polishing business area with a land size of ± 0.1 hectare or equivalent to 0.001 km² located in Aceh Province. The rice milling and polishing capacity is estimated at 10 tons per month. Agricultural land for rice milling and rice polishing operations with a land size of ± 0.5 hectare or equivalent to 0.005 km² located in Aceh Province. The rice milling and polishing capacity is estimated at 50 tons per month. Processed food production business area with a land size of ± 3 hectares or equivalent to 0.03 km² located in West Java Province. The production capacity is estimated at 5,000 packs of processed food per month. Coffee plantation business area with a land size of ± 36 hectares or equivalent to 0.36 km² located in Aceh Province. The production capacity is estimated at 3 tons of coffee per month. Snack production business area with a land size of ± 0.5 hectare or equivalent to 0.005 km² located in Aceh Province. The production capacity is estimated at 2,000 packs of snacks per month. Shrimp pond business area with a land size of ± 1 hectare or equivalent to 0.01 km² located in Aceh Province. The production capacity is estimated at 5 tons of shrimp per harvest cycle. Rice farming business area with a land size of ± 2 hectares or equivalent to 0.02 km² located in Aceh Province. The production capacity is estimated at 10 tons of rice per harvest cycle. Processed food production business area with a land size of ± 2.4 hectares or equivalent to 0.024 km² located in West Java Province. The production capacity is estimated at 4,000 packs of processed food per month. The number of MSMEs is estimated to exceed 100 MSMEs related to the sustainable food management sector.

No.	Financing Category	% Composition Underlying Sukuk	Financing Segment	Description & Impact Indicators
4.	Socio-Economic Improvement and Empowerment	0.18%	Financing in the Micro segment under Musyarakah contract	<ul style="list-style-type: none"> a. Financing distribution in the Micro segment for BSI Micro Business (BUM) financing and People's Business Credit (KUR) under a Musyarakah contract. b. Distribution to 14 recipients consisting of 7 NOA BSI Micro Business (BUM) and 7 NOA People's Business Credit (KUR) Financing.
5.	Renewable Energy	5.79%	Financing in the Corporate segment under Musyarakah contract	<p>Financing distribution to 1 (one) Geothermal Power Plant (PLTP) company and 1 (one) Medium-Scale Hydropower Plant (PLTA) company with the following details:</p> <ul style="list-style-type: none"> a. Estimated renewable energy generation per year in MWh (electricity) and estimated annual Greenhouse Gas emissions avoided in tons of CO₂ equivalent, as follows: <ul style="list-style-type: none"> 1) The Geothermal Power Plant (PLTP) located in East Java Province with an installed capacity of 1 x 35 MW. The estimated electricity generated per year is 211,999 MWh. 2) The Medium-Scale Hydropower Plant (PLTA) located in Bengkulu Province with an installed capacity of 4 x 4 MW. The estimated electricity generated per year is 78,972 MWh. b. Estimated annual Greenhouse Gas emissions reduced/avoided in tons of CO₂ equivalent, as follows: <ul style="list-style-type: none"> 1) The Geothermal Power Plant (PLTP) located in East Java Province with estimated annual greenhouse gas emissions avoided of 184,439 tons CO₂-eq per year. 2) The Medium-Scale Hydropower Plant (PLTA) located in Bengkulu Province with estimated annual greenhouse gas emissions avoided of 74,233 tons CO₂-eq per year.
6.	Sustainable Water and Wastewater Management	0.31%	Financing in the Corporate and Commercial segments under Musyarakah contract	<ul style="list-style-type: none"> a. Financing distribution to 1 (one) company engaged in a clean drinking water supply system business activity in South Tangerang. b. The volume of water distributed is estimated at 11,595 cubic meters per day or 134 litres per second. c. The number of households served by the drinking water supply installation is estimated at 38,094 households. Based on this assumption, the installation is estimated to meet the needs of 114,283 people.

No.	Financing Category	% Composition Underlying Sukuk	Financing Segment	Description & Impact Indicators
7.	Products that Reduce Resource Use and Generate Less Pollution (Eco-Efficient)	6.31%	Financing in the Corporate segment under Musyarakah contract	<ul style="list-style-type: none"> a. Financing distribution in the Corporate segment under a Musyarakah contract for customers whose business processes have utilized resources and technology to generate less pollution (eco-efficient). The distribution was provided to 3 (three) customers operating in the paper processing industry in Banten Province, and the fertilizer industry in Aceh and South Sumatra Provinces. b. The estimated hazardous waste generated from the operational processes of the paper processing plant in Banten that is recycled amounts to 385,007 tons per year, or 100% of the total hazardous waste generated. c. The estimated annual Greenhouse Gas emissions that can be avoided by customers operating in the paper processing industry in Banten amount to 25,460 tons CO₂-eq. The customer has a Solar Power Plant (PLTS) with an installed capacity of 21.63 MWp and is estimated to generate 30,310 MWh of electricity per year. d. The estimated annual Greenhouse Gas emissions that can be avoided by customers operating in the fertilizer industry amount to 285 tons CO₂-eq, with the following details: <ul style="list-style-type: none"> 1) The customer in Aceh has a Solar Power Plant (PLTS) with an installed capacity of 45 kWp and is estimated to generate 59 MWh of electricity per year. The estimated annual Greenhouse Gas emissions avoided amount to 50 tons CO₂-eq. 2) The customer in South Sumatra has a Solar Power Plant (PLTS) with an installed capacity of 210 kWp and is estimated to generate 274 MWh of electricity per year. The estimated annual Greenhouse Gas emissions avoided amount to 235 tons CO₂-eq. e. The estimated hazardous waste generated from the operational processes of fertilizer plants that is recycled amounts to 1,223 tons per year, or 100% of the total hazardous waste generated, consisting of 1,131 tons per year generated by customers in South Sumatra and 92 tons per year generated by customers in Aceh. f. The customer operating in the fertilizer industry in South Sumatra has obtained the Green Building EDGE (Excellence in Design for Greater Efficiencies) Certificate issued by the Green Building Council Indonesia (GBCI).
8.	Sustainable Management of Living Natural Resources and Land Use	22.87%	Financing in the Commercial and Corporate segments under Musyarakah contract	<ul style="list-style-type: none"> a. Financing distribution in the Commercial and Corporate segments under a Musyarakah contract to 1 (one) customer managing a rubber plantation that has obtained Forest Stewardship Council (FSC) certification and 6 (six) customers managing palm oil plantations that have obtained Indonesian Sustainable Palm Oil (ISPO) certification. b. The total area of rubber plantations that have obtained FSC certification is approximately ±97,891 hectares. c. The total area of palm oil plantations that have obtained ISPO certification is approximately ±51,660 hectares.

All impact indicators presented have been calculated based on applicable standard methodologies. The achievements in both the environmental pillar (decarbonization) and the social pillar (empowerment) demonstrate that BSI's Sustainability Sukuk funds operate effectively in supporting the transition to a green economy while maintaining inclusivity for the community. BSI is committed to maintaining accountability in impact measurement (impact metrics).

CONCLUSION

Through the publication of this Sustainability Sukuk Phase II Report, PT Bank Syariah Indonesia Tbk (BSI) demonstrates its dedication to deepening the integration of sustainability values across all lines of the Bank's business. BSI is committed to continuously increasing the scale of its contribution to inclusive and environmentally friendly national economic growth through the implementation of increasingly progressive and measurable ESG values.

As one of the key drivers of sustainable finance in Indonesia, BSI views its strategic role not only as a provider of capital but also as a strategic partner for customers in navigating the transition toward a low-carbon economy. Through Sustainability Sukuk Phase II, BSI continues to strengthen decarbonization financing solutions for customers across various industry sectors, encouraging them to shift toward more responsible business practices with minimal environmental impact. This approach represents BSI's tangible contribution to the Indonesian government's target of achieving Net Zero Emissions.

BSI ensures continued transparency and accountability in the management of Sustainability Sukuk funds as part of good corporate governance practices. Periodic monitoring is conducted to ensure that the funds distributed generate optimal positive impacts in line with the Sustainable Development Goals (SDGs). Furthermore, to maintain the trust of investors and the public, BSI continues to collaborate with the SDGs Hub of Universitas Indonesia as an independent external review provider to deliver comprehensive verification. These efforts affirm BSI's position as a credible, transparent, and visionary Islamic financial institution in building a sustainable future for Indonesia.

APPENDIX

Appendix 1. Key Calculation Assumptions

KUBL/KUBS Category	Project Type	Data Assumptions
Renewable Energy	Medium-Scale Geothermal Power Plants (PLTP) and Hydroelectric Power Plants (PLTA)	The minimum Greenhouse Gas emission calculation that can be avoided uses assumptions from publicly available sources as follows: <ol style="list-style-type: none"> A Geothermal Power Plant (PLTP) located in East Java Province with the 2019 ESDM Electricity Emission Factor of 0.87 and total energy generated of 211,999 MWh, resulting in an estimated avoided Greenhouse Gas emission of 184,439 tons of CO₂-eq per year. A Medium-Scale Hydropower Plant (PLTA) located in Bengkulu Province with the 2019 ESDM Electricity Emission Factor of 0.94 and total energy generated of 78,972 MWh, resulting in an estimated avoided Greenhouse Gas emission of 74,233 tons of CO₂-eq.
Sustainable Water and Wastewater Management	Drinking Water Management	The number of people with access to clean drinking water is based on the number of customers recorded by the company.
Products that Reduce Resource Use and Generate Less Pollution (Eco-Efficient)	Pollution Reduction	<ol style="list-style-type: none"> Customers engaged in the Paper Processing industry operating in Banten Province have Solar Power Plant (PLTS) installations and are estimated to generate 30,310 MWh of electricity per year. The 2019 ESDM Electricity Emission Factor is 0.84, resulting in an estimated avoided Greenhouse Gas emission of 25,460 tons of CO₂-eq. Customers engaged in the Fertilizer Industry operating in Aceh Province have Solar Power Plant (PLTS) installations and are estimated to generate 59 MWh of electricity per year. The 2019 ESDM Electricity Emission Factor is 0.86, resulting in an estimated avoided Greenhouse Gas emission of 50 tons of CO₂-eq. Customers engaged in the Fertilizer Industry operating in South Sumatra Province have Solar Power Plant (PLTS) installations and are estimated to generate 274 MWh of electricity per year. The 2019 ESDM Electricity Emission Factor is 0.86, resulting in an estimated avoided Greenhouse Gas emission of 235 tons of CO₂-eq.